

Actuator ID10K

ID10K has the same dimensions and waterproof performance as ID10. It adopts ACME screw design to achieve a greater thrust up to 7000N, which is suitable for industry field, agriculture, and construction machinery that requires quick movement.



Features and Options

Main applications: Industry, Agriculture, Construction

Standard features:

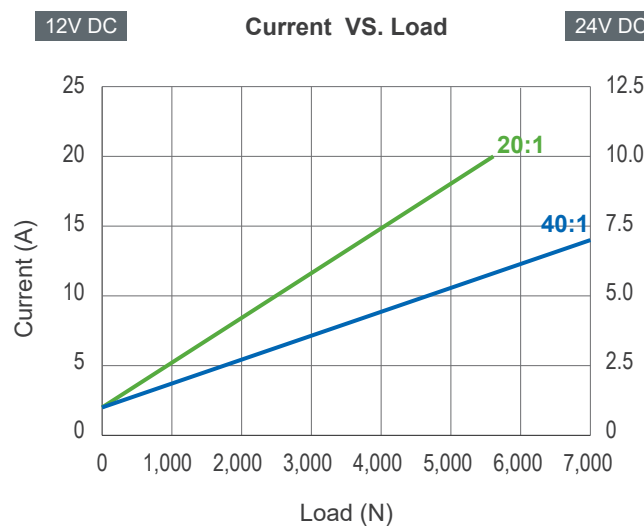
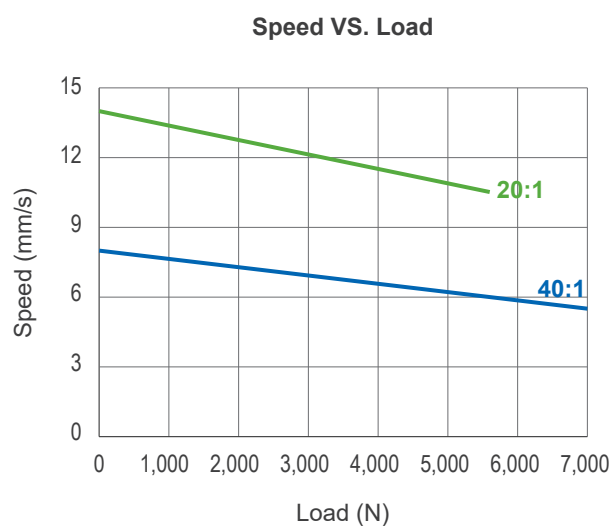
- Input voltage: 12 / 24V DC
- Max. rated load: 7,000N
- Max. static load: 13,600N
- Speed at no load: 14mm/sec (Gear motor 20:1 average value)
- Stroke: 102 / 153 / 203 / 254 / 305 / 457 / 610mm
- IP level: IP65 (Static; non-action)
- Overload protection by clutch
- Spindle type: ACME screw
- Extension tube material: Electroplated steel
- Color: Black
- Duty cycle: 10%, max. 2 min. continuous operation in 20 min.
- Operating ambient temperature: -25°C~+65°C

Options:

- Positioning signal feedback with Hall effect sensor x 1
- Analog and absolute positioning feedback with Potentiometer (POT)
- Limit switches
- IP level: IP66/IP69K (Static; non-action)

Performance Data

Model No.	Gear ratio	Push / Pull Max. (N)	* Typical speed (mm/s)		* Typical current (A)			
			No load	Full load	No load		Full load	
					12V	24V	12V	24V
ID10K-XX-G4A-20-XXX	20:1	5,600	14	10.5	2	1	20	10
ID10K-XX-G4A-40-XXX	40:1	7,000	7	5.5	2	1	14	7



Remarks:

- * The typical speed or typical current refers to an average value that is neither the upper limit nor the lower limit. The performance curves are made with typical values.

Dimensions

• Retracted length (A)

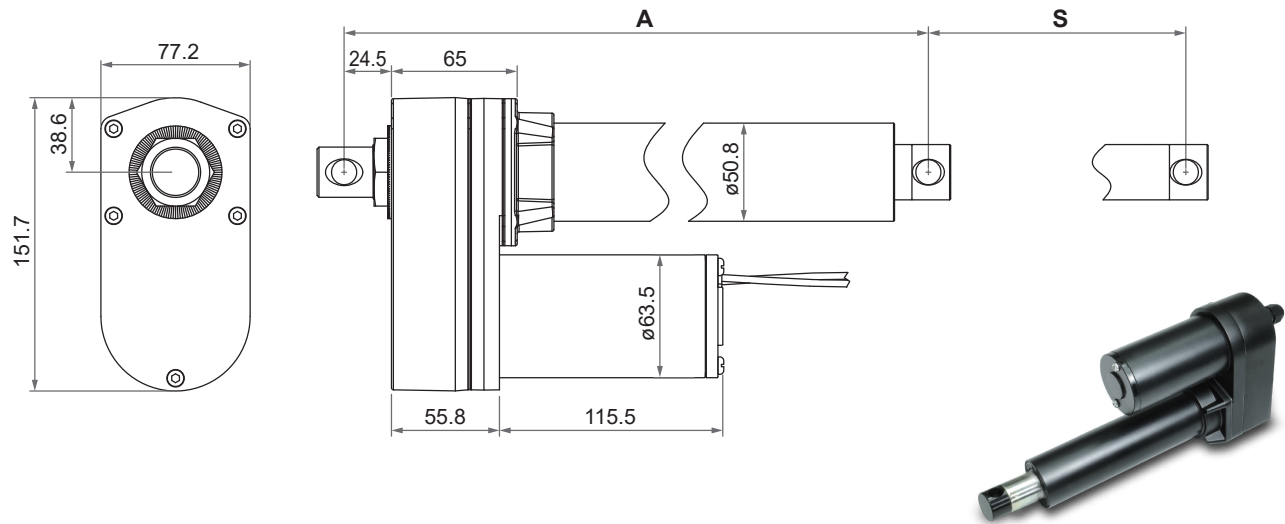
Option	Stroke (S)						
	102 (4")	153 (6")	203 (8")	254 (10")	305 (12")	457 (18")	610 (24")
Basic	262	313	364	414	465	668	821
With positioning feedback	302	353	404	454	505	708	861
With limit switches	359	410	460	511	613	765	918

(Tolerances: ±5mm)

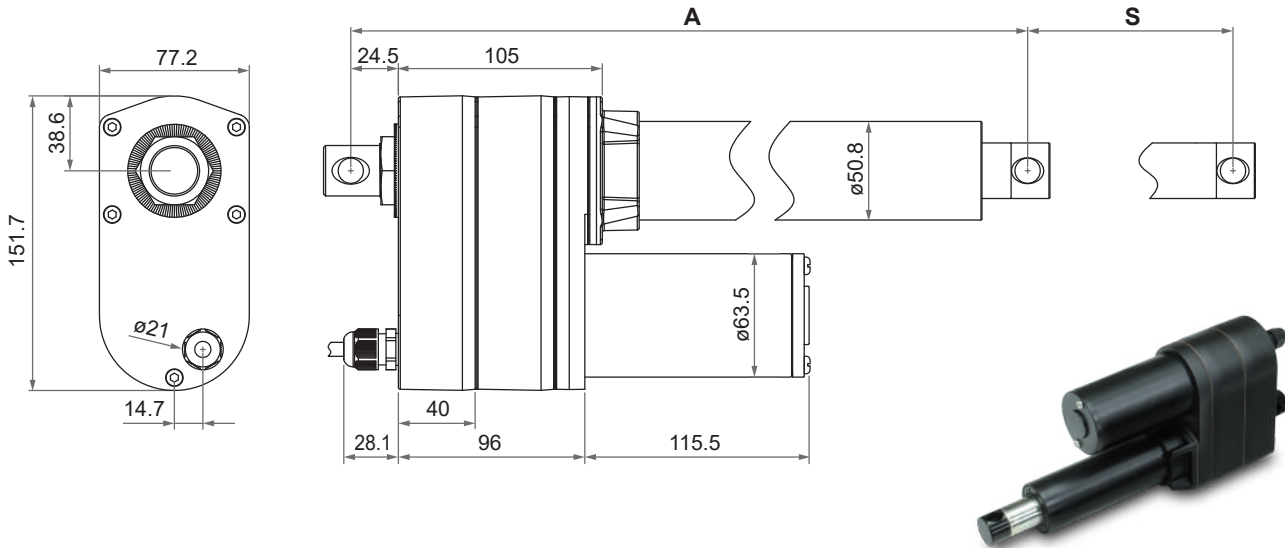
• Drawing

A. IP65 (Standard)

- Basic (Without limit switch nor positioning feedback)

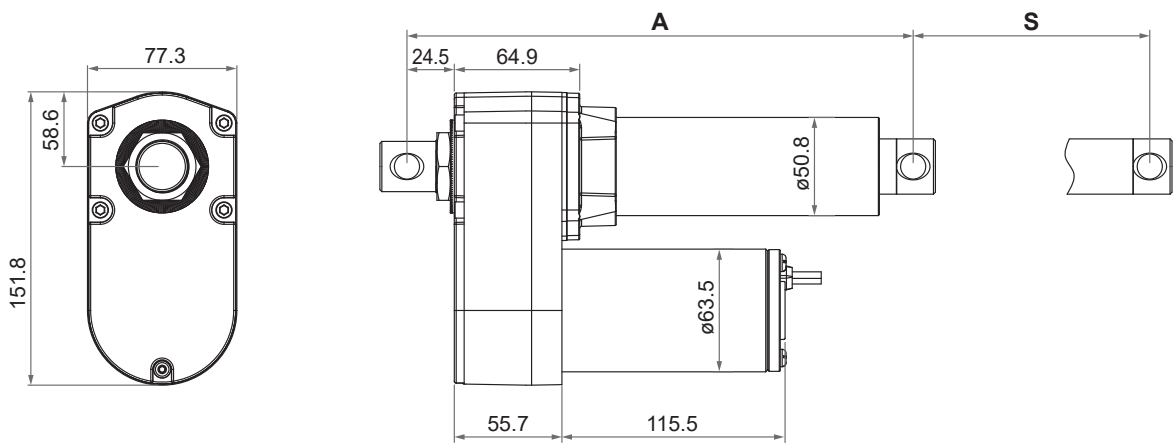


- With limit switches or positioning feedback

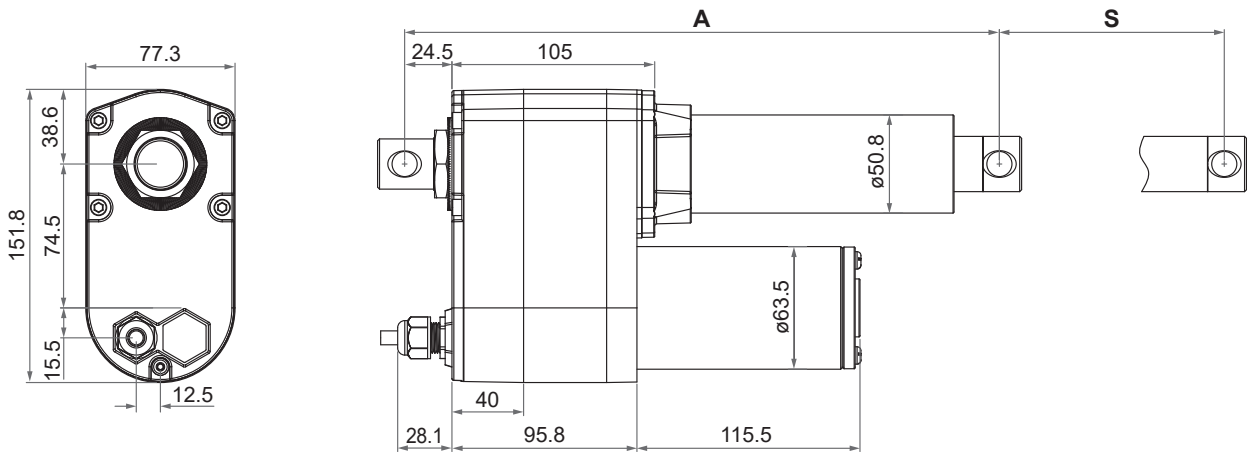


Unit: mm

B. IP66/IP69K (Option)
- Basic (Without limit switch nor positioning feedback)



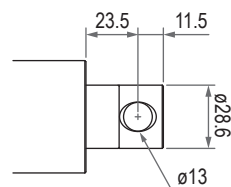
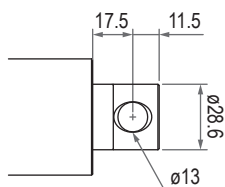
- With limit switches or positioning feedback



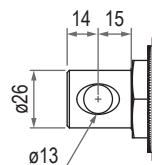
• Front connector

- Basic (Without limit switch nor positioning feedback)

- With limit switches or positioning feedback

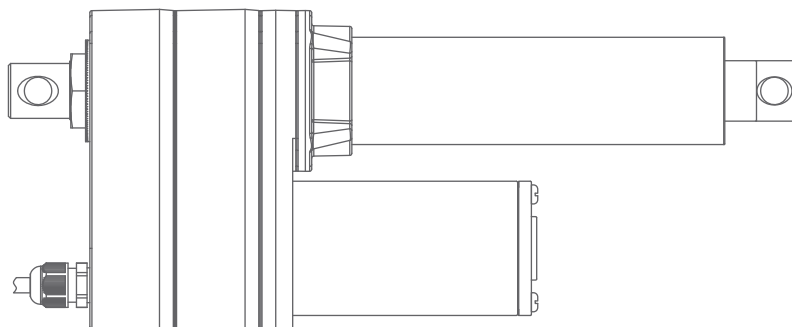
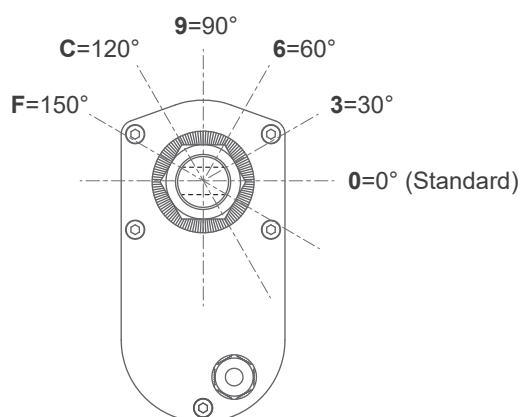


• Rear connector



Unit: mm

• Pivot orientation of rear connector



Note: As an example in 0° pivot of rear connector.

Compatibility

Product	Model	ID10K spec
Controller	CI72	Standard
Accessory	MB30 mounting bracket (Fig. 1)	Standard, mounting hole ø13mm.



Fig. 1



ID10K in-position control needs to cooperate with the limit switch option or set an external limit switch. If you choose positioning signal feedback with single Hall effect sensor, it is recommended that the actuator can be used with a controller such as CI72 to provide software stroke limit. ID10K can not use clutch overload protection as an in-position control, otherwise it will seriously reduce the service life of the actuator.

Wiring

• Basic (Without limit switch nor positioning feedback)

Gear ratio: 20:1

	Wire color	Definitions	Descriptions
Power wires	Red	DC Power	Connect red wire to "Vdc +" & black wire to "Vdc -" of DC power to extend the actuator. Switch the polarity of DC input to retract it.
	Black		

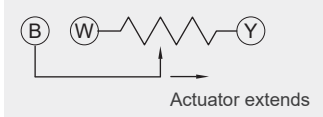
Gear ratio: 40:1

	Wire color	Definitions	Descriptions
Power wires	Red	DC Power	Connect red wire to "Vdc -" & black wire to "Vdc +" of DC power to extend the actuator. Switch the polarity of DC input to retract it.
	Black		

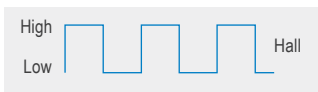
• With limit switches (Without positioning feedback)

	Wire color	Definitions	Descriptions
Power wires	Red	DC Power	Connect red wire to "Vdc +" & black wire to "Vdc -" of DC power to extend the actuator. Switch the polarity of DC input to retract it.
	Black		

• With Potentiometer (POT) absolute positioning feedback

	Wire color	Definitions	Descriptions																
Power wires	Red	DC Power	Connect red wire to “Vdc +” & black wire to “Vdc -“ of DC power to extend the actuator. Switch the polarity of DC input to retract it.																
	Black																		
Signal wires	Yellow	Vin	Input voltage 70V max.																
	Blue	POT output	<div>1. Potentiometer specification:<ul style="list-style-type: none">- 10K ohm, 10 turns.- Tolerance ±5%</div> <div>2. Output voltage: The voltage (resistance) between blue and white increases linearly from about 0 when the actuator extends, and decreases when it retracts.</div> <div></div> <div>3. There are different resolutions according to the stroke length (as table below)</div> <table><thead><tr><th>Stroke (mm)</th><th>Resistance (tolerance: ±0.3KΩ)</th></tr></thead><tbody><tr><td>102 (4")</td><td>0.3 ~ 7.3K</td></tr><tr><td>153 (6")</td><td>0.3 ~ 8.7K</td></tr><tr><td>203 (8")</td><td>0.3 ~ 7.3K</td></tr><tr><td>254 (10")</td><td>0.3 ~ 9.1K</td></tr><tr><td>305 (12")</td><td>0.3 ~ 7.9K</td></tr><tr><td>457 (18")</td><td>0.3 ~ 9.4K</td></tr><tr><td>610 (24")</td><td>0.3 ~ 8.2K</td></tr></tbody></table>	Stroke (mm)	Resistance (tolerance: ±0.3KΩ)	102 (4")	0.3 ~ 7.3K	153 (6")	0.3 ~ 8.7K	203 (8")	0.3 ~ 7.3K	254 (10")	0.3 ~ 9.1K	305 (12")	0.3 ~ 7.9K	457 (18")	0.3 ~ 9.4K	610 (24")	0.3 ~ 8.2K
	Stroke (mm)	Resistance (tolerance: ±0.3KΩ)																	
102 (4")	0.3 ~ 7.3K																		
153 (6")	0.3 ~ 8.7K																		
203 (8")	0.3 ~ 7.3K																		
254 (10")	0.3 ~ 9.1K																		
305 (12")	0.3 ~ 7.9K																		
457 (18")	0.3 ~ 9.4K																		
610 (24")	0.3 ~ 8.2K																		
	White	GND																	

• With single Hall effect sensor positioning feedback

	Wire color	Definitions	Descriptions
Power wires	Red	DC Power	Connect red wire to "Vdc +" & black wire to "Vdc -" of DC power to extend the actuator. Switch the polarity of DC input to retract it.
	Black		
Signal wires	Yellow	Vin	Voltage input range: 5 ~ 20V
	Blue	Hall output	<p>High= Input - 1.2V ($\pm 0.6V$) Low= GND Hall signal data:</p>  <p>Hall effect sensor resolution: 1.0 pulse/mm</p>
	White	GND	

Ordering Key

		ID10K-	12	G4A	40	102	0	0	0	P	L	5	0
Input voltage	12: 12V DC 24: 24V DC												
Motor and spindle type	G4A: 4500rpm / 4mm pitch / ACME screw												
Gear ratio	20: 20:1 40: 40:1												
Stroke	102: 102mm (4") 153: 153mm (6") 203: 203mm (8") 254: 254mm (10") 305: 305mm (12") 457: 457mm (18") 610: 610mm (24")												
Front connector	0: Standard												
Rear connector	0: Standard												
Pivot orientation of rear connector (Refer to Page 5)	0: 0° (Standard) 3: 30° 6: 60° 9: 90° C: 120° F: 150°												
Positioning feedback	0: None P: Potentiometer (POT) H: Hall effect sensor x 1												
Limit switches	0: None L: Limit switches												
IP level	5: IP65 (Standard) 9: IP66/IP69K												
Cable length	0: 250mm straight 1: 500mm straight 3: 1000mm straight 5: 1500mm straight												

Terms of Use

The user is responsible for the suitability of MOTECK products, and the products listed on the MOTECK website are subject to change without notice. MOTECK reserves the right to terminate sales or delete any products displayed on the website or listed in its catalog.